



PLANMECA
Digital Academy

PLANMECA FIT™

Quick guide

Planmeca PlanCAD® Easy workflow



SCAN

Verifying the amount of scan data will ensure a better fitting restoration.



Scan Prep
100% of Prep and contact zones; begin on the occlusal surface of the prep.



Erase Brush
Tongue, Cheek, Fingers or Extra data



Scan Opposing
100% Occlusal and buccal gingival data

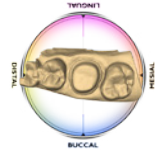


Scan Buccal
Capture all teeth in prior scans



Bite Alignment
Verify before moving to the Margin tab.

MARGIN



Orientation
Automatically active; balance the model from the occlusal view to mark the margin.



Orientation can be de-activated or activated at any time using this icon.



Trace Margin
From the occlusal view, mark the margin on the shoulder



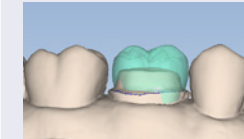
Use Move Margin to adjust placement



Use Add Segments to redraw a portion

Verify Alignment

Verify the orientation of the model with the Green Preview Tooth.



Use the Green Preview Tooth as a guide to align the model after activating Orientation



DESIGN

Follow the design flow. Return to a section and repeat any necessary steps when needed.

Generate

Generate proposal is the first step in the design process.

AutoGenesis **ON** - Click Apply

AutoGenesis **OFF** - Resize, Reposition, Apply

Some cases may require orientation to be adjusted.

Fit

Customizing the proposed restoration to fit in its place over the prep.



Use **Incremental Change Tools** to adjust overall fit.



Click an arrow next to the desired adjustment. Twist, Rotate, or Expand to fit in place.

Form

Refine contours, marginal ridges, embrasures and cusps.



Use **Freeform Change Tools** to make small adjustments to contour.



Rubber Tooth can be used to adjust: Axial Walls, Marginal Ridges, Occlusal table, and Embrasures.

Use **Move Feature** for cusps, **Smooth Surface** to blend, and **Dropper** to add material when needed to modify the proposal.

Function

Use these tools to adjust the bite and occlusion to ideal parameters.



Adjust bite with **View Bite Registration (x2), View Contacts, & Contact Refinement.**

Goal: White, Brown, Black



Adjust interproximal contacts with Freeform Change Tools. Use **Hide Model** and **Smooth Surface** to refine contacts. Goal: Light Green/ Aqua surrounded by Dark Blue

Prepare for Milling

Ensure the restoration will mill properly.



Material Thickness:
Occlusal table 1.5 - 2 mm
Axial walls 1 - 1.5 mm



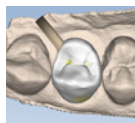
Ideal margins are Yellow. If red/orange verify placement with **Move Margin**. Use **Dropper** as needed to add material



MILL

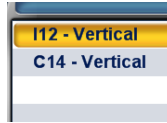
Sprue Position

Adjust the sprue away from margins, contacts, and occlusion when needed.



Block Size Selection

Select the block size for the chosen restoration and material.



Mill SIM

Check the internal fit of your restoration before milling.



Look for internal interferences in the intaglio surface of the restoration and use Slice Plane when needed to evaluate.



Scanning Technique

Goals & Patterns

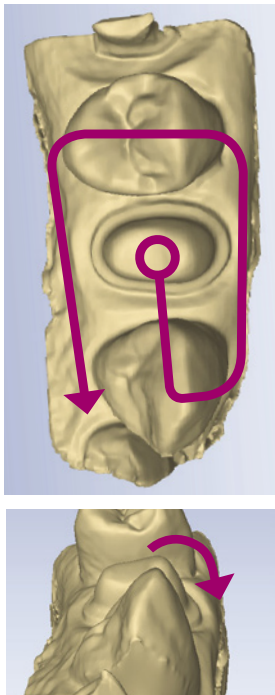
Preparation

100% of the prep and interproximal contact areas

90% of the adjacent teeth

Good axial data for design

2-3 mm gingival tissue on buccal and lingual



Interproximal

To achieve 100% of the interproximal contact area, a slight rotation of the scanner will be needed

Rest the scanner on the proximal dentition and perpendicular to the arch

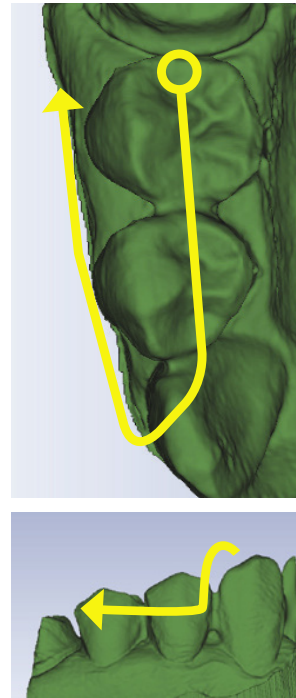


Opposing

100% of the cusps

2-3 mm gingival tissue on the buccal side

Lingual and gingival data not necessary

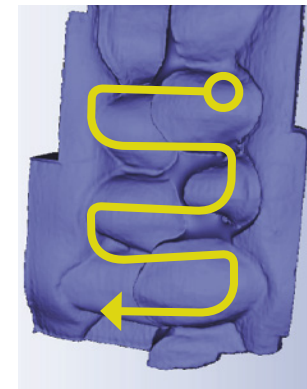


Buccal Bite

Capture the buccal surface of the dentition in the prep and opposing

2-3 mm gingival tissue

No rotations necessary



Note: Information on scanning Bite Registration material can be found in the User Manual

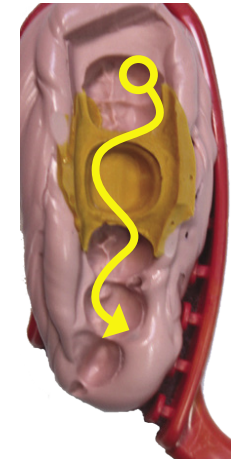
Impressions

100% of the prep and interproximal contact areas

90% of the adjacent teeth

Good axial data for design

2-3 mm gingival tissue on buccal and lingual



IPS e.max CAD

Characterization Process

1
Preparing
the restoration



Object Fix

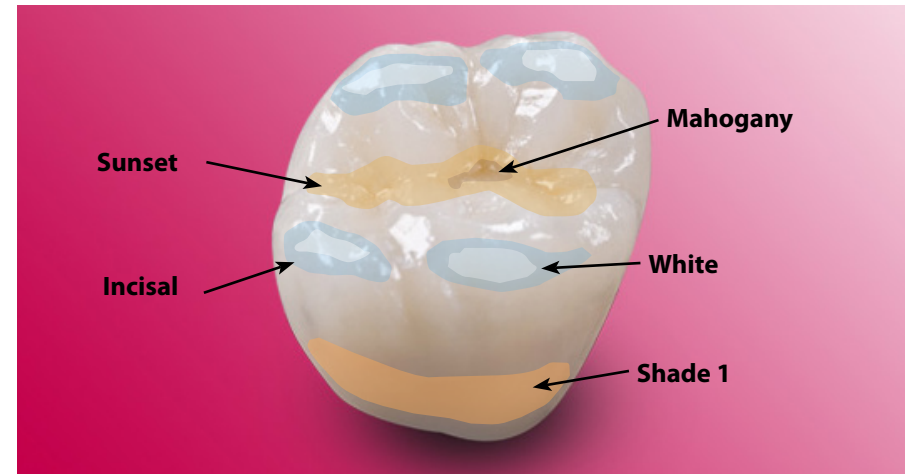
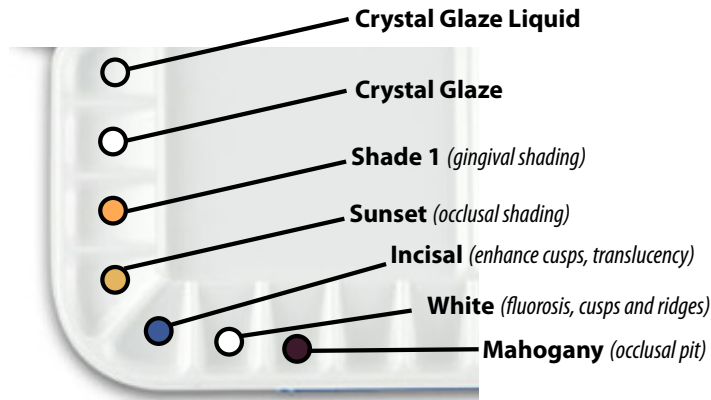
Flow (shown) will be used to affix the restoration to the firing pin for characterization and firing. Object Fix - Putty can also be used



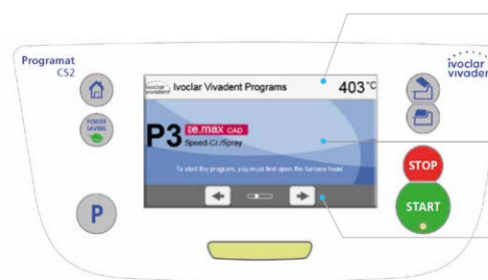
Crystallization Tray

After characterization place the restoration onto the crystallization tray for firing. Note there is an additional Speed Crystallization Tray for IPS e.max

2
Characterization
of IPS e.max



3
Oven program
and firing



Information bar

Indicates current furnace temp and selected furnace programs

Main screen

Indicates the selected firing program, firing progress, and other menu options

Navigation bar

Browse between programs and settings

Program Information

- P1 - IPS e.max
- P2 - Corrective firing
- P3 - Speed crys. spray
- P4 - Empress

PLANMECA

Planmeca Oy | Asentajankatu 6 | 00880 Helsinki | Finland
tel. +358 20 7795 500 | fax +358 20 7795 555 | sales@planmeca.com | www.planmeca.com

