

ACTEON IMPLANT MAINTENANCE BUNDLE

USE CODE "IMPMAINT2018" WHEN ORDERING

**NEWTRON XS
BLED (F62117)**



**AIR-N-GO EASY
(F10135, F10133,
F10132, F10131,
or F10130)**

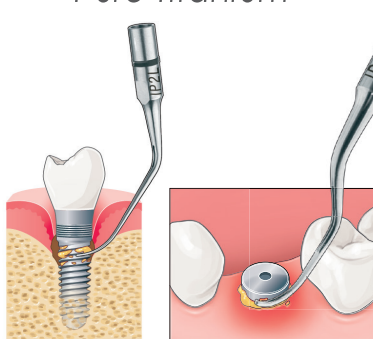


Purchase all four
implant maintenance
solutions together for

\$4,750

Save \$1,969!

implantProtect
Pure Titanium



**IMPLANT PROTECT TIP KIT
(F02120)**

**PERIO EASY
KIT (F10120)**



PROMOTION REDEMPTION INSTRUCTIONS - USE CODE "IMPMAINT2018" WHEN ORDERING

Offers cannot be combined with any other offers & no substitutions are permitted / One promotional offer per package. Promotional offers are good for purchases made between the dates of July 1 to September 30, 2018. Dealer invoice must be received by ACTEON prior to November 1, 2018. To redeem free goods, mail, fax or e-mail a copy of the dealer invoice as proof of purchase to: ACTEON Inc, Suite 140, Mount Laurel, NJ 08054 / info@acteonusa.com

124 Gaither Drive | Suite 140
Mount Laurel | NJ 08054 | USA
Tel. 1-800-289-6367
Fax. 1-856-222-4726
www.acteongroup.com
info@acteonusa.com

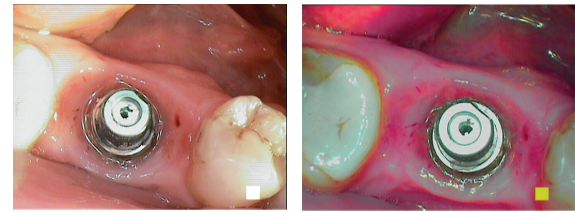
MORE INVENTIVE

LESS INVASIVE



IMPLANT MAINTENANCE WITH ACTEON TECHNOLOGY

DETECT Wingrove 5 Step Implant Assessment



1. Visual Soft Tissue Inspection

2. Probe / Palpate Signs of Infection

Use SOPROCARE Intraoral Camera PERIO Mode

3. Assess for Residue of Cement and Calculus

4. Mobility, Pain, and/or Occlusion

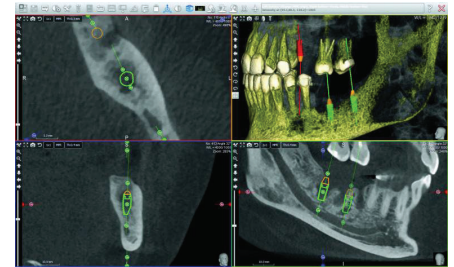
5. Assess Bone Level - Radiographic image to assess health of the implant by accurately measuring the crestal bone level around the implant(s)

• **1-4 Implants:** Make Vertical Bitewing or Periapical (PA) of each implant

Use PSPIX or Sopix² with Sopro Imaging software

• **5 or more Implants:** Panoramic, CBCT, or individual PA's of all implants

Use XMIND Trium CBCT for Peri-Implantitis diagnosis



DIAGNOSE

Healthy Implant - No bone loss greater than 0.5 - 1.5 mm at 1 year, no sign of inflammation

Peri-Mucositis - Inflammation that affects only the soft tissues with no sign of bone loss

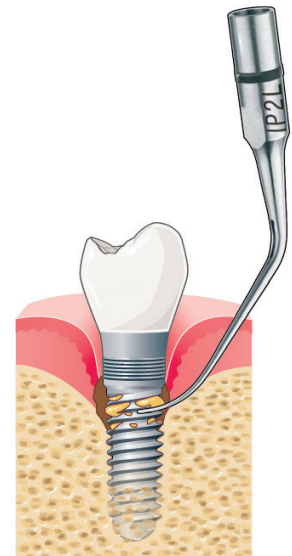
Peri-Implantitis - Inflammatory reaction that affects both soft tissue & bone

• Early: Pocket depth greater than 4 mm, bleeding on probing, bone loss less than 25% compared to length of the implant

• Moderate: Pocket depth greater than 6 mm, bleeding on probing, bone loss 25%-50%

• Advanced: Pocket depth greater than 8mm, bone loss greater than 50% of implant length

Note: Bleeding on probing and/or exudate on 2 or more aspects of the implant. Compare radiograph to original at loading or earliest radiograph following loading.



TREAT

Protocol for Debridement Based on Implant Design, Access, & Prosthesis using ACTEON Implant Protect Tips

Healthy Implant Protocol

1. Use **AIR-N-GO easy** Air Polisher with **PERIO Glycine Powder** and **PERIO easy** nozzle to disrupt subgingival biofilm
2. Insert tip subgingival & activate 5 seconds per site (4 sites per implant; Mesial, Buccal, Distal & Lingual)
3. Ultrasonic to lavage/debride - **NEWTRON Scaler** with **Implant Protect** tips
4. Polish restoration-Switch tip on **AIR-N-GO easy** to **PERIO Maintenance** Tip and use **PERIO Glycine powder** already in canister to remove any stain present

Peri-Mucositis Protocol

1. Use **AIR-N-GO easy** with **PERIO Glycine Powder** and **PERIO easy** tip to treat inflammation of peri-mucositis
2. Insert tip subgingival & activate 5 seconds per site (4 sites per implant; Mesial, Buccal, Distal & Lingual)
3. Ultrasonic to lavage/debride if calculus present - **NEWTRON Scaler** with **Implant Protect** Tips
4. Apply anti-microbial varnish (no fluoride), power toothbrush, water flosser, & antimicrobial rinse 2 times daily and re-evaluate in 3-6 weeks

Peri-Implantitis Protocol: See Specialist for Treatment

Contact ACTEON North America for complete, detailed Implant Maintenance Protocol