

DEXcam™ 4HD

High Definition Intra-oral Video Camera



Focus on Results

DEXcam™ 4 HD Intra-oral Video Camera

Pictures and video are worth a thousand words.

Focus on Diagnostics.

For early detection and accurate representation of dental conditions, an intra-oral camera is essential to delivering optimum quality of care. DEXcam™ 4 HD yields remarkably clear and focused images in real-time that are crucial for diagnosis and for fully documenting your patients' overall oral health.

Focus on Education.

Create immediate visual impact with high-definition images from DEXcam 4 HD. These highly detailed "show and tell" photos, which remain clear even when enlarged, can increase your patients' understanding of your clinical findings and support treatment recommendations.

Focus on Collaboration.

Sharing a full range of images to partnering doctors can help patients gain the most benefit from multifaceted treatment. DEXIS makes it easy to share images with colleagues by offering a choice of formats that can be sent directly from the patient's record.

Focus on Ease of Use.

The thoughtfully designed DEXcam 4 HD with its robust housing, automatic features, and convenient portability provides easy control over focus, image capture, and movement between operatories.

Focus on Documentation.

DEXcam 4 HD helps you create and keep a clear history of improvement or decline of the patient's oral health over time for both dental and medical purposes. Create photo documentation of your findings for treatment in pre-determination claims to insurance carriers.

Focus on Workflow.

DEXIS is well known for creating time-savings and efficiency in both its hardware and software that translates into less time interacting with your computer and more time interacting with patients. DEXcapture™ – companion software to DEXcam 4 HD, is an innovative and highly effective way to acquire and compare images. The software's guided and flexible workflow puts you in charge!





Features and Benefits:

- › The DEXcam 4 HD intra-oral video camera feels solid and balanced in your hand. The anodized aluminum housing has a high-quality, professional aesthetic and adds a degree of durability.
- › The latest advanced 1.3-million-pixel CMOS sensor delivers high-resolution images that remain clear and crisp even when enlarged.
- › The precision 7-element glass optical lens produces exceptional image quality and helps prevent image distortion.
- › The camera has been optimized to help ensure images are displayed in natural color tones.
- › Capture buttons, which are on both sides to accommodate both right- and left-handers, are highly sensitive and easy to trigger. This aids in image clarity as camera movement is less likely.
- › A long depth of field allows you to move closer to or away from a tooth while the image remains in focus during your explanations of conditions and treatment.
- › The camera's tip houses intensely bright, state-of-the-art LEDs to yield well-illuminated, easy-to-see images even in the posterior regions.
- › 5-step focusing levels produced by a reactive motor-driven mechanism allow you to move easily between five field-of-view levels – from full face to magnified tooth.
- › A single press freezes the image; simply hold to save the image into the patient record.
- › The USB connection makes it a highly portable, plug-n-play camera. At the camera end of the cable, a reliable, industrial-grade connector offers quick-disconnect/reconnect functionality.

Introducing DEXcapture:

The software's guided and flexible workflow puts you in charge!

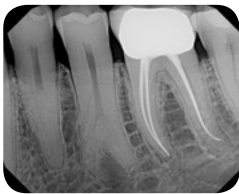


- › Not just limited to radiographs, clinicians can now capture images in a series. Choose from 3 basic series or create a custom series for intra-oral camera images, and take advantage of DEXcapture's guided workflow. When using each series, once an image is captured, the software automatically moves to the next tooth position.
- › DEXcapture's ability to number images in two separate streamlined methods provides the ultimate flexible workflow per procedure: Pre-select a tooth number before capture, or acquire all images, and then select tooth numbers via drag-and-drop.
- › While using DEXcapture, you are able to compare newly captured images side-by-side with existing X-rays, CariVu images, and photos.

Focus on Confidence.

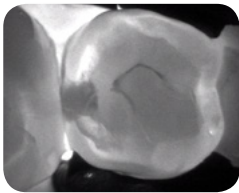
From remarkable image quality and award-winning hardware to dedicated training and knowledgeable support, DEXIS strives to boost your confidence in the systems and images you use daily to diagnose, educate, and treat.

DEXIS provides you with a comprehensive visual narrative of the patient's oral health by offering three distinct imaging modalities.



DEXIS™ Platinum Digital X-rays

The award-winning DEXIS Platinum Digital X-ray System¹ is the easiest to use, the most comfortable for the patient, and offers the best and most consistent images — even at low doses.²



DEXIS™ CariVu™ Transilluminated Images

Using Near-infrared Transillumination technology, CariVu images support the identification of occlusal, recurrent, and interproximal caries and cracks. The system offers 99% accuracy³, and in some cases, offers an alternative to bitewing radiographs.⁴



DEXcam™ 4 HD Intra-oral Camera Images

Used for diagnosis, education, and collaboration, the images from the DEXcam 4 HD are clear and highly detailed, and the camera is easy to use, reliable, and portable.



DEXIS™

DEXIS, LLC

1910 North Penn Road, Hatfield, PA 19440

1-888-883-3947 • www.dexis.com

¹ For DEXcam, CariVu and DEXIS Platinum Sensor Indications for Use visit www.dexis.com/ifu. ² Data on file: DEXIS Sensor Competitive Performance Study and DEXIS Sensor Clinical Evaluation Report. ³ Kühnisch J. Benefits of the DIAGNOcam Procedure for the Detection and Diagnosis of Caries [study project]. Munich: Ludwig Maximilian University of Munich; 2013. ⁴ Söchtig, F, et al. Caries detection and diagnostics with near-infrared light transillumination: Clinical experiences. Quintessence Int. 2014;45:531-538.