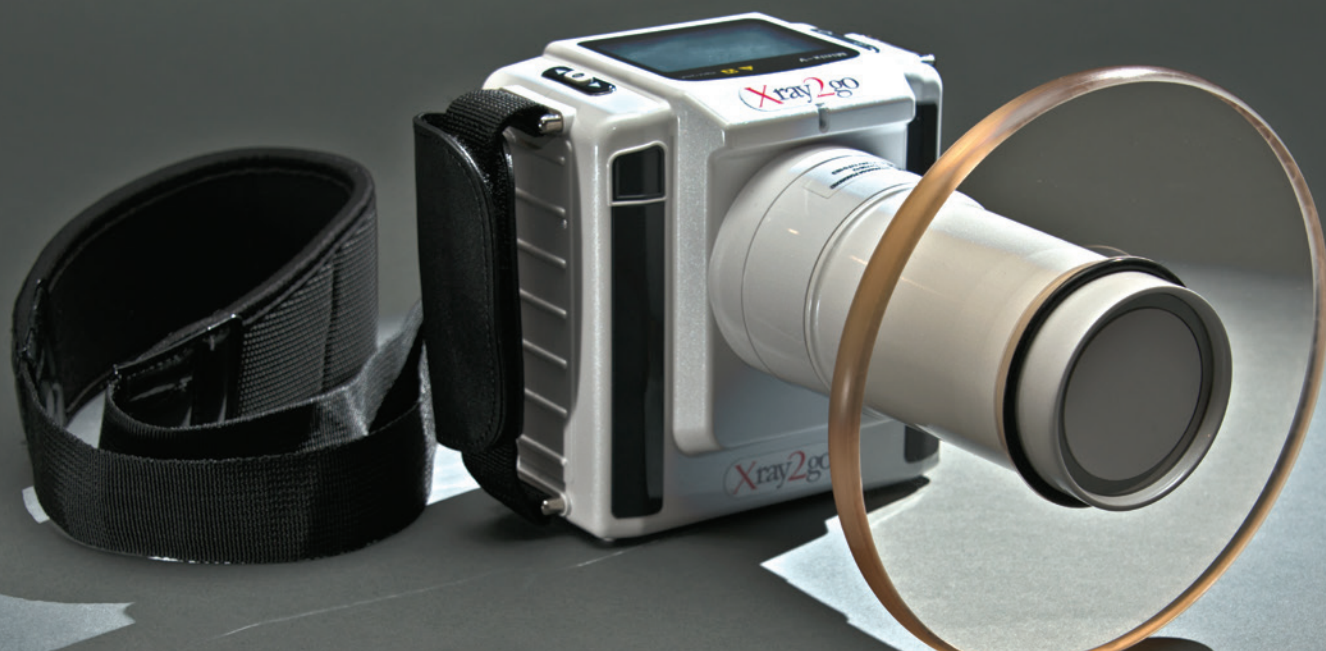


FAST • EFFICIENT • SAFE

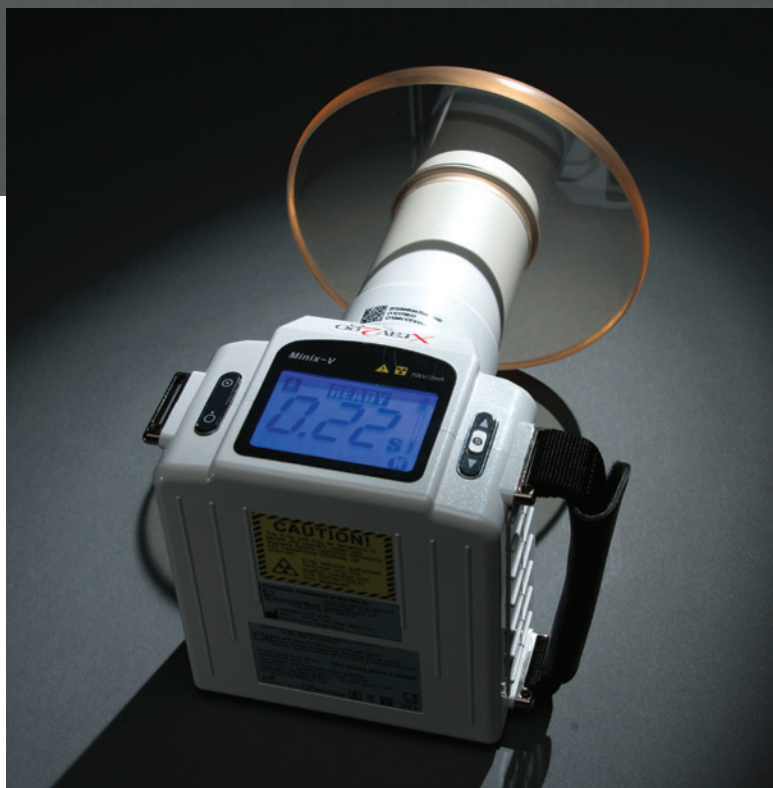


Improve Workflow
and Improve Patient
Experience with this
hand-held X-ray.

Xray2go

BENEFITS

- Shoulder Strap
- **Rechargeable Battery**
(at least 150 exposures per charge)
- Safe & Simple for technicians
- Low Patient Exposure
- Camera-like Operation
- Easy to Learn and Use
- Portable for Multi-Operatory Use
- Film, Plate & Sensor Capability
- No Installation
- 60 kv Frequency X-ray
- High Image Quality

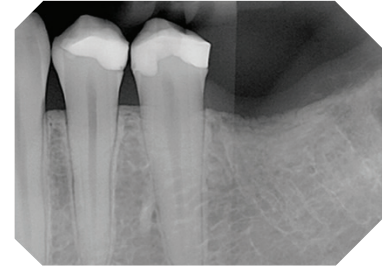
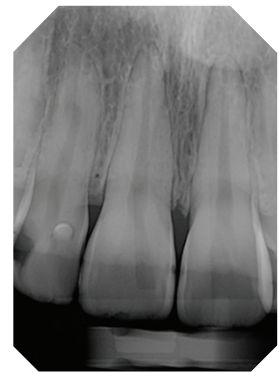
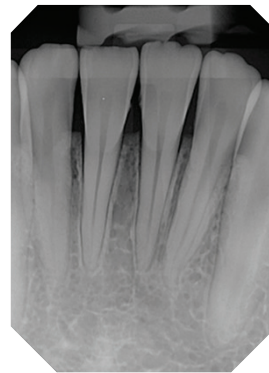
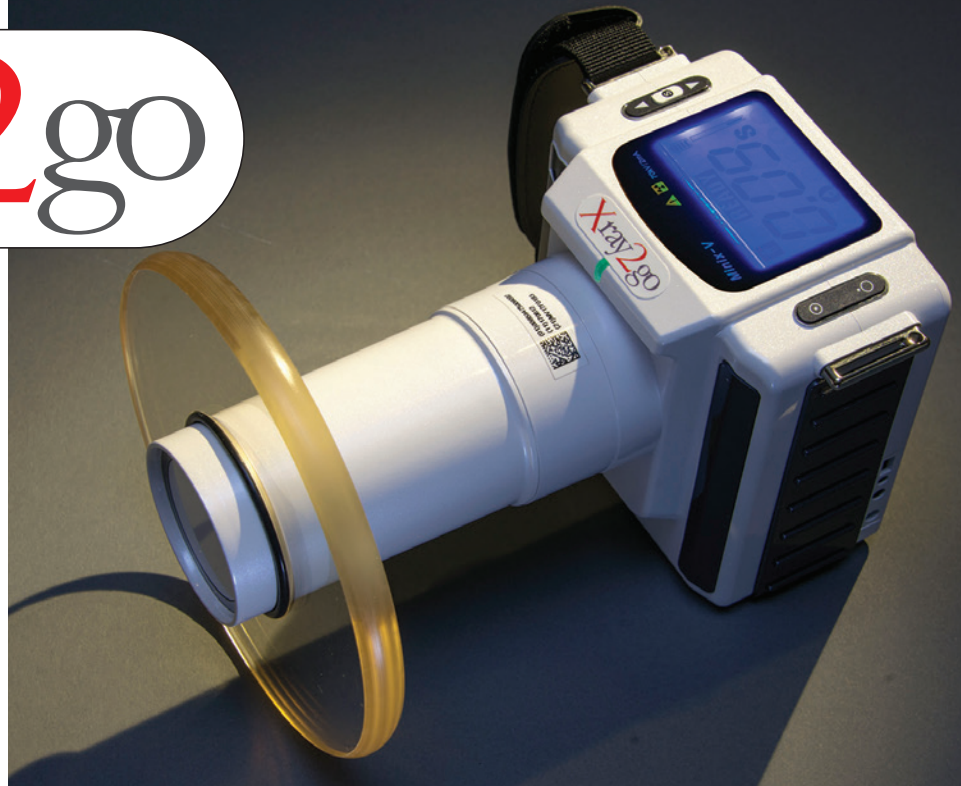


Digital DOC[®]

1-800-518-1102 • www.digi-doc.com

Xray2go

Save Time.
Improve Efficiency.
Improve Patient
Experience by staying
in the operator while
taking all radiographs.



1. **Rechargeable Battery**
(at least 150 exposures per charge)
2. Light Weight & Compact Size
3. Micro-computer and Specialized Circuit for Precise Exposure Technique Factors
4. Self-diagnostic Control Panel
5. Simple and Easy Setting for X-ray Exposure
6. Preprogrammed Exposure Time for Fast and Easy Operation
7. Internal Protection Shield to Protect Operator and Patient from Dispersed Radiation
8. Constant Emission Power Technology



 **Digital DOC**[®]
1-800-518-1102 • www.digi-doc.com