

Control Heads



Forest Standard IC

Equipped with an ultra reliable pneumatic control block, the Standard IC is acclaimed for its simple design and straight-forward technology. We use one Clippard anti-retraction valve per handpiece enabling each one to operate independently. If a water drip were to occur in one position due to a stuck valve, two back-ups are available, unlike handpieces from other manufacturers with only one valve for all three positions. Because no water enters the main control block, you won't experience the damaging effects of water deposits and contamination. Affordable Excellence is achieved when every detail is done well.



Aluminum Lid



Metal Air/Water T's



Appropriate Technology (Built-in Tool Kit)



Forest Euro

The Euro control head pivots at the center of the chassis, allowing it to be positioned both next to and over the patient in the transthoracic position. Designed for maximum reach to the patient, the whips are mounted at the front of the control. The true beauty of Forest's European style delivery is how smoothly the whips operate. They pull forward effortlessly and move side to side with just enough resistance to retract back. This control is top-rated in the eyes of the discerning European dentists who have tested it against the vast array of whip system controls available to them.



Cast Iron Chair Mounts



Feather-Touch Movement



Center Pivot

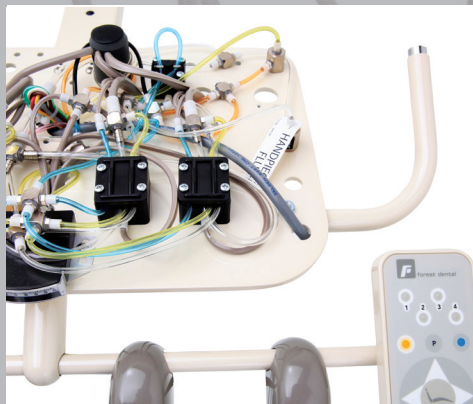


Forest Value

The Value Series has earned a reputation for remarkable reliability at an affordable price. The durable pinch valve block system makes it ideal for high-production clinics, teaching facilities and the hygiene room. After seven to ten years of use, typical maintenance involves no more than moving the existing tubing a quarter of an inch away from the old pinch-point. This series is another great example of Affordable Excellence, simple yet appropriate technology.



Adjustable Holders



Simple Effective Technology

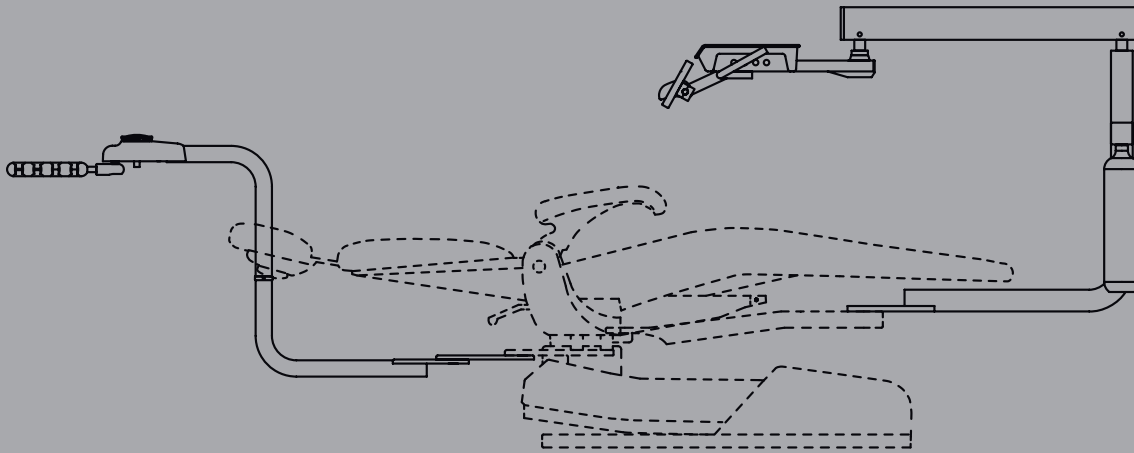


Designer Friendly

Control Head Mounting Options

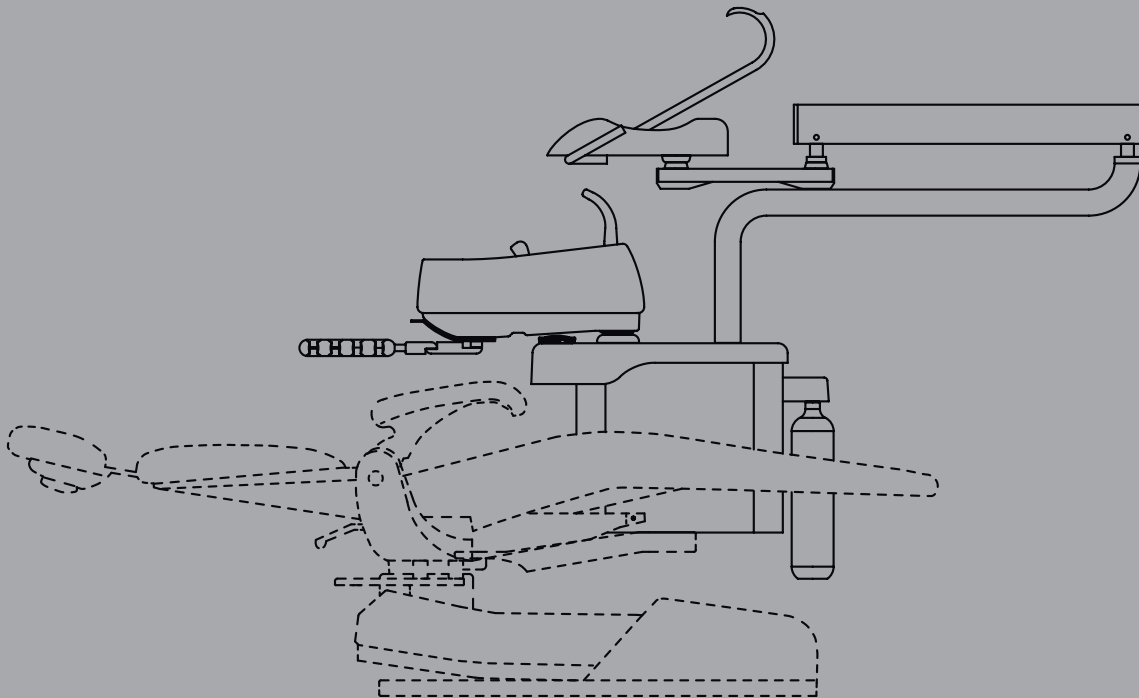
Whether mounting your Forest control on the chair, wall, floor or a cart, you can be certain that with our simple and appropriate technology you will enjoy peace of mind for years to come.

Pivot Chair Mount



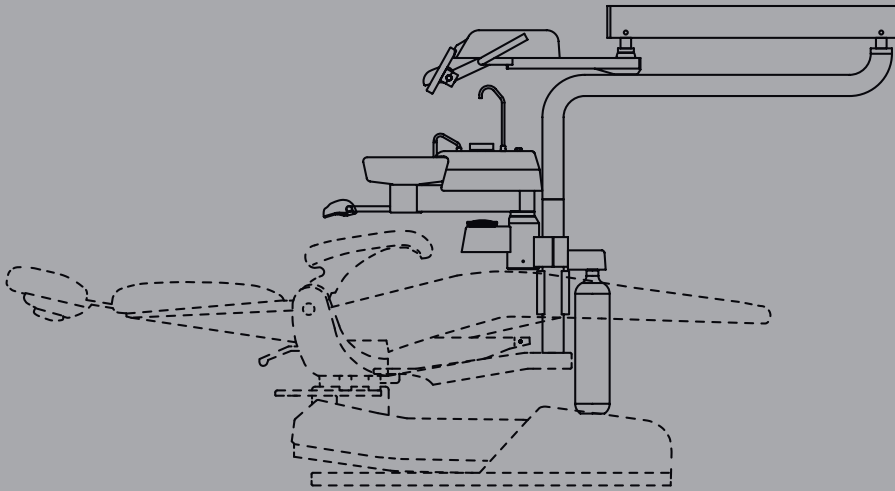
Pivot Chair Mounts easily move left to right on large roller bearings to accommodate left and right-handed practitioners. Unlike a Fixed Chair Mount delivery system, the mounting arm comes from underneath the patient rather than over the top, making it less obtrusive and more patient-friendly. Pivot Assistant's Instrumentation, Operatory Lights and Monitor Mounts are popular options to support your style of practice.

Fixed Chair Mount With Sidebox



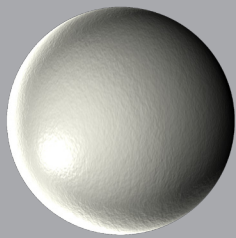
Fixed Chair Mounts With Sidebox allow for a Cuspidor, Assistant's Instrumentation a Monitor and Light to mount on a sidebox, which is large enough to accommodate a host of ancillary support products, finish the aluminum side covers in one of our nine powder coat paint colors and choose a complementary carbon fiber trim to finish the top cap. If you use a cuspidor, select our beautiful high-gloss ceramic black for a customized and beautiful patient-friendly delivery system.

Fixed Chair Mount Without Sidebox

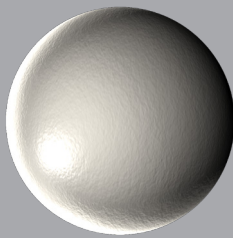


Fixed Chair Mounts Without Sidebox are the most cost effective solution of our three chair-mounted configurations. With the ability to mount a cuspidor, Assistant's Instrumentation, a Light and Monitor, this mount not only eliminates the cost of the sidebox, but it also has a smaller footprint, perfect for the narrow treatment room.

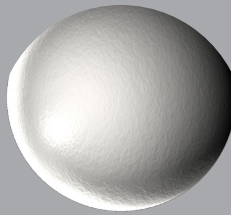
Designer Friendly™ Surface Options



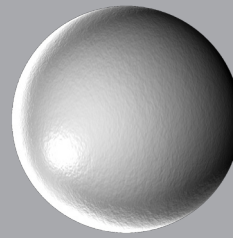
Forest Grey



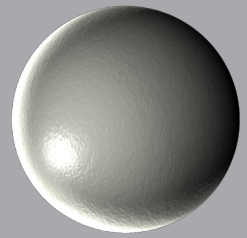
Shadow



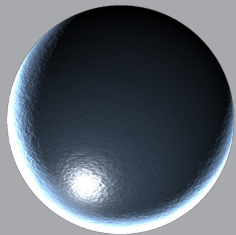
White



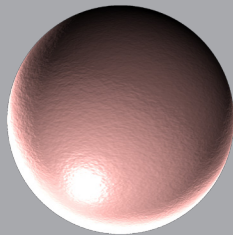
Arctic Silver



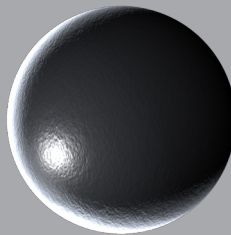
Pewter



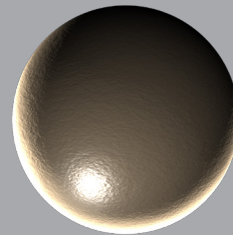
Midnight



Copper



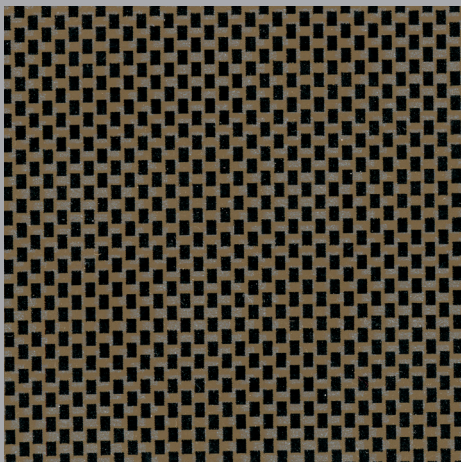
Charcoal



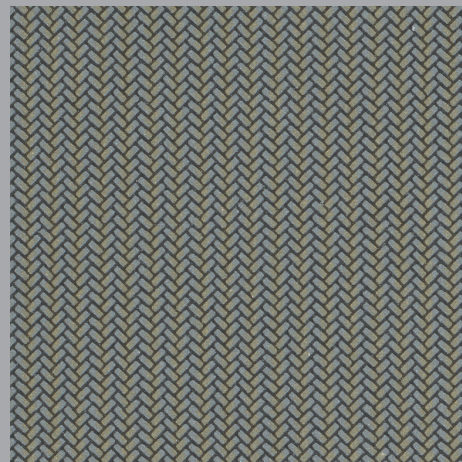
Bronze

Powder Coat

Carbon Fiber



Laser Leather



Lemans



Greywood



Forest Dental



* sales videos available online at forestdental.com

Phone

- 800 . 423 . 3555
- 503 . 640 . 3012

Fax

- 503 . 693 . 9715

Digital

- sales@forestdental.com
- forestdental.com

Address

- 6200 ne cherry drive hillsboro oregon 97124