

Introducing  
**3s PowerCure™ System**



**ZERO TO 4MM  
IN 3 SECONDS**



**Efficient  
Esthetics**



Isolate



Bond



Restore



Cure

**ivoclar  
vivadent®**  
passion vision innovation

# Where productivity meets esthetics

3s PowerCure™ offers a fully coordinated system of products for the creation of long-lasting and esthetic composite restorations of Class I and II cavities.

Harness the power of a complete product system with Adhese® Universal single-component universal adhesive, Tetric® PowerFill sculptable 4-mm composite and Tetric® PowerFlow opaque flowable 4-mm composite. Light-cure these components in 3 seconds from the occlusal surface using the intelligent Bluephase® PowerCure curing light. You will notice the time savings – without compromising quality and esthetics.



## **Natural esthetics**

in posterior teeth

## **Higher process reliability**

due to fewer increments

## **Fewer errors**

due to shorter curing times  
and intelligent curing

## **Same performance**

as conventional composites<sup>1</sup>

## **Time savings of up to 57%**

in posterior restorations<sup>2</sup>

<sup>1</sup> Data on file

<sup>2</sup> Tetric PowerFill and Tetric PowerFlow compared to Tetric EvoCeram and Tetric EvoFlow; data available on request.

1

2

3

4

## Efficient Esthetics

All the products for direct restorative procedures are optimally coordinated with each other and help you increase your workflow efficiency – without compromises in quality and esthetics.



### 1 Isolate

Effective isolation with **OptraGate®**, cotton rolls and saliva ejector



### 2 Bond

Direct intraoral application of **Adhese® Universal** with the efficient VivaPen®



### 3 Restore

**Tetric® PowerFill** is a sculptable and **Tetric® PowerFlow** an opaque flowable composite which can be placed in increments up to 4mm and light cured in just 3 seconds.



### 4 Cure

**Bluephase® PowerCure** enables intelligent and quick curing times starting from 3 seconds with a light intensity of 3,000 mW/cm<sup>2</sup>



# Esthetics in the posterior region

Would you rather opt for low translucency and esthetic results or high translucency and high depth of cure? The 4-mm composites Tetric PowerFill and Tetric PowerFlow combine the advantages of both properties so you can have both: esthetics and efficiency without dilemma.



The highly reactive, patented light initiator **Ivocerin®** has paved the way for the development of Tetric PowerFill and Tetric PowerFlow for esthetic posterior restorations.

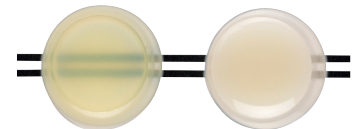


Conventional composites designed for the placement of large increments are often very translucent. The highly reactive light initiator Ivocerin enables esthetic increments that feature an enamel- and dentin-like translucency and a reliable depth of cure.

The **Aessencio® technology** presents a milestone in the esthetic optimization of 4-mm composites. The material features a high initial translucency to be able to cure to the desired depth of cure. During polymerization, it gradually changes to a more opaque shade. In the case of Tetric PowerFlow, the final translucency is below 10% – a value that mimics natural dentin. This allows stained tooth structure to be concealed effectively.



The in-vitro test demonstrates the effect of the Aessencio technology: The black lines under the Tetric PowerFlow sample are clearly visible before light-curing. After curing, they are completely masked due to the change in translucency:



Tetric PowerFlow before and after polymerization

## Well-matched materials:

The different consistencies and shades are uniquely formulated to be used in any combination. For instance, you can achieve restorations with natural esthetic properties by combining Tetric PowerFlow and Tetric EvoCeram.

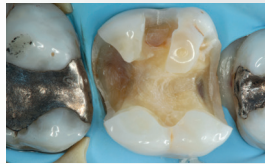
# Higher predictability due to fewer increments

Tetric PowerFill and Tetric PowerFlow are less technique sensitive than conventional composite resins because they provide clinicians with a streamlined application.

The reason: Increased layer thicknesses of up to 4 mm<sup>1</sup> are possible.  
This means fewer working steps and therefore fewer possibilities for errors.



Preoperative situation



Prepared cavity



Baseline

6-month recall  
Source: Dr Lukas Enggist, Ivoclar Vivadent, Liechtenstein

## Bluephase PowerCure curing light

CURING MODE	TIME	LIGHT INTENSITY	INDICATIONS	MATERIAL
<b>3s</b>	3 seconds	3,000 mW/cm <sup>2</sup>	restorations in the posterior region of permanent dentition (Class I and II)	Tetric PowerFill, Tetric PowerFlow, Adhese Universal
<b>Turbo</b>	5 seconds	2,000 mW/cm <sup>2</sup>	all restorations in Class I – V cavities indirect restorations (per mm of ceramic)	e.g. IPS Empress® Direct, Tetric-Line
<b>High</b>	10 seconds	1,200 mW/cm <sup>2</sup>	all direct and indirect restorations	e.g. IPS Empress Direct, Tetric-Line, Adhese Universal, Variolink® Esthetic
<b>PreCure</b>	2 seconds	950 mW/cm <sup>2</sup>	removal of cement excess	e.g. Variolink Esthetic

Comparison: Bluephase G4 offers the curing modes "High" and "PreCure".

## Fewer errors thanks to short curing times

Light polymerization is the most common source of error in direct restorative treatments. An efficient polymerization protocol that minimizes the curing time to the shortest possible length reduces the risks inherent in the light-curing step and increases the quality of the final restoration.

## Reliable curing results with Polyvision™ intelligent curing

The innovative Bluephase® PowerCure is an intelligent LED curing light that actively supports you in your polymerization tasks. The curing light automatically detects movement of the handpiece during the light-curing procedure and identifies the potential for an inadequate cure of the restoration. If this is the case, it alerts the user of the improper operation by vibrating and it automatically extends the exposure time by 10%. If the handpiece accidentally slips a long way from its position, the light automatically switches off, allowing the operator to repeat the light-curing procedure applying the correct light dose.



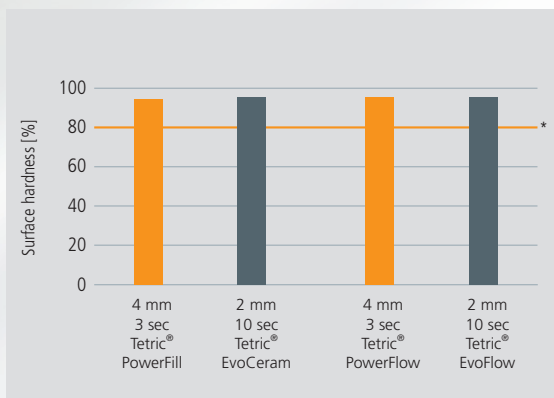
**Polyvision**  
INSIDE

<sup>1</sup> The maximum layer thicknesses recommended for Tetric PowerFill and Tetric PowerFlow have been increased from 2 mm (conventional treatment protocol) to up to 4 mm.

# Compare to conventional composite restorations

Although they are applied in up to 4-mm increments and light-cured with significantly reduced curing times, Adhese Universal, Tetric PowerFill and Tetric PowerFlow result in only minimal polymerization shrinkage due to our proprietary Addition-Fragmented Chain Transfer agent (AFCT), excellent marginal adaptation and low heat development. Their physical properties have been shown several times to be on a par with those of conventional composites placed using a more complicated incremental method.

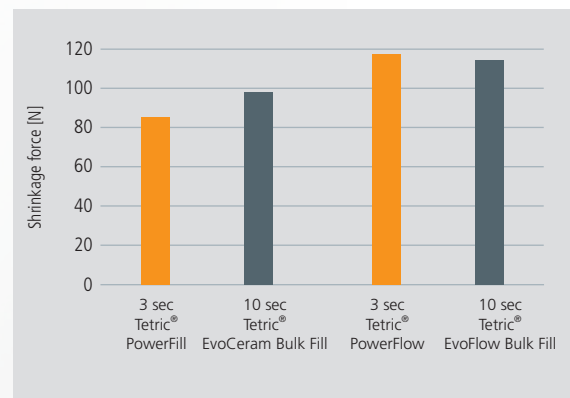
## 1 Reliable curing results



Source: R&D Ivoclar Vivadent AG, Schaan, Liechtenstein, 2018

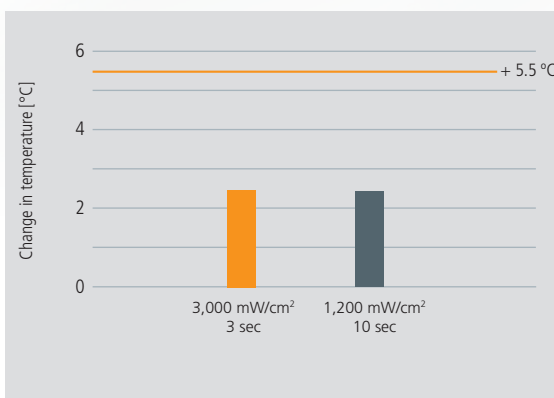
\* Reference: Watts D, Amer O, Combe E. Characteristics of visible light-activated composite systems. Br Dent J. (1984) 209-215

## 2 Low shrinkage



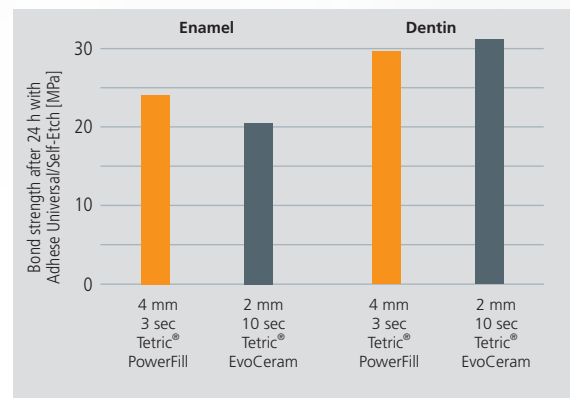
Source: R&D Ivoclar Vivadent AG, Schaan, Liechtenstein, 2018

## 3 Low heat development



Source: Dr Cesar Arrais, State University of Ponta Grossa, Paraná, Brazil (2018/2019)

## 4 Predictable high bond strength values



Source: R&D Ivoclar Vivadent AG, Schaan, Liechtenstein, 2018

See how it works! Read the science behind at:  
[www.ivoclarvivadent.com/3s\\_Science\\_en](http://www.ivoclarvivadent.com/3s_Science_en)

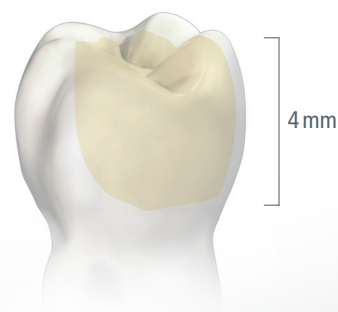


# Increase efficiency in the posterior region<sup>1</sup>

Tetric PowerFill and Tetric PowerFlow enable you to place restorations in fewer increments, while achieving the same or even better treatment results compared with conventional layering techniques.

This means: You can increase your dental workflow efficiencies. You will appreciate it and so will your patients.

Fewer steps thanks to 4-mm increments:



## Experience the difference with 3s PowerCure™

When direct Class I and II restorations are placed in permanent posterior teeth, 3-second exposures from the occlusal aspect are sufficient for all curing steps with the Bluephase PowerCure in the 3sCure mode. Simply expose Adhese Universal, Tetric PowerFill and Tetric PowerFlow to the light-intensity of 3,000 mW/cm<sup>2</sup> produced by the curing light. You will notice right away that the curing time you require is considerably reduced. At the same time, you will continue to achieve the customary high-quality esthetic results.

“There is no way around the polymerization of composite materials. A 3-second cure comes in exceptionally handy here.”

**Dr Nathaniel Lawson**  
Assistant Professor and Division Director of Biomaterials  
UAB School of Dentistry, Birmingham, USA







# Delivery forms

## Bluephase PowerCure and System Kit

691918BU	1 x Bluephase® PowerCure 10-240V with System Kit: 20 x 0.2g Tetric PowerFill IVA, 1 x 2g syringe Tetric PowerFlow IVA, 1 x 2ml Adhese Universal VivaPen
668253BU	1 x Bluephase® PowerCure 10-240V with Syringe System Kit: 1 x 3g syringe Tetric PowerFill IVA, 1 x 2g syringe Tetric PowerFlow IVA, 1 x 2ml Adhese Universal VivaPen

## Adhese Universal

664504WW	System Kit VivaPen® (1 x 2 ml) 100 VivaPen snap-on cannulas, 20 VivaPen protective sleeves
665156WW	Adhese® Universal VivaPen® 1 x 2ml
627178	Refill VivaPen® snap-on cannulas (100 pcs.)
627492	Refill VivaPen® protective sleeves (300 pcs.)
663720WW	Adhese® Universal Bottle 1 x 5g
663721WW	Adhese® Universal Bottle 2 x 5g

## Tetric PowerFill Refill

668107WW	Tetric® PowerFill 20x0.2g IVA
668076WW	Tetric® PowerFill 20x0.2g IVB
668077WW	Tetric® PowerFill 20x0.2g IVW
668083WW	Tetric® PowerFill Ref. 1x3g IVA
668084WW	Tetric® PowerFill Ref. 1x3g IVB
668115WW	Tetric® PowerFill Ref. 1x3g IVW

## Tetric PowerFlow Refills

692413WW	Tetric® PowerFlow Refill 20 x 0.2g IVA
692414WW	Tetric® PowerFlow Refill 20 x 0.2g IVB
692415WW	Tetric® PowerFlow Refill 20 x 0.2g IVW
692409WW	Tetric® PowerFlow Refill 1 x 2g IVA
692410WW	Tetric® PowerFlow Refill 1 x 2g IVB
692411WW	Tetric® PowerFlow Refill 1 x 2g IVW

669838 – 20 x 1.2mm cannula tips

## Shade Guide

668082WW – Tetric® PowerFill & PowerFlow Shade Guide