



CLEARVISION DIGITAL SENSOR SYSTEM

ClearVision® is the digital sensor system from Midmark, designed to simplify practice integration and deliver high-quality images in a durable, patient-friendly design. Featuring a direct USB 2.0 connection, advanced CMOS technology optimizes resolution while reducing noise to produce sharp, detailed images for immediate review and diagnosis.

FEATURES



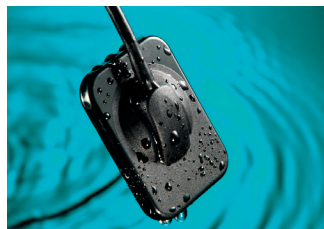
PATIENT COMFORT

ClearVision sensor's thin profile, rounded corners, and contoured surfaces are designed to minimize patient discomfort. Available in two sizes to accommodate patient needs and exam requirements.



BETTER PRACTICE INTEGRATION

ClearVision integrates with our Preva 2.0 and Preva Plus intraoral X-rays through a direct USB hub.



QUALITY AND DEPENDABILITY

Our sensor housing and cable are designed for reliability and a water-tight connection to promote asepsis.

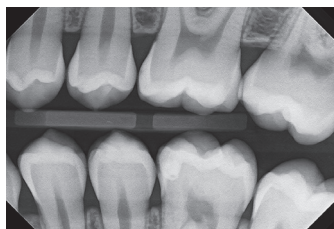


IMAGE CLARITY

Advanced CMOS technology optimizes resolution while reducing noise, producing sharp, detailed images for immediate review and diagnosis.



IMAGING SOFTWARE COMES STANDARD

Progeny® Imaging Software supports image acquisition, diagnosis and image handling. Magnification, contrast or density adjustment, measurement assistance and annotations are just a few of the powerful tools provided. Images can be exported, emailed or printed for insurers, your patients or referrals.



PEACE OF MIND

All ClearVision sensors come with a standard two-year manufacturer's warranty covering failure or malfunction due to normal uses and our exclusive Sensor Safe® extended care and priority replacement plan for years three through five. Contact Midmark Customer Experience for the Sensor Safe extended-care plan details.

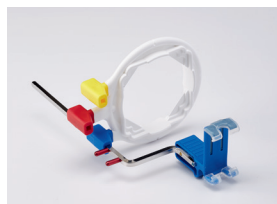
CLEARVISION SPECIFICATIONS

ClearVision® Digital Sensor systems include the ClearVision Sensor, Progeny® Imaging Software, USB drive, sample sheath pack, Rinn® XCP-DS Fit® sensor positioning guide and sensor holder.

Film Size Equivalent	Size 1 Size 2
Active Area	30 mm x 20 mm (Size 1) 36 mm x 26 mm (Size 2)
Number of Pixels	1580 lines x 1050 pixels (Size 1) 1896 lines x 1368 pixels (Size 2)
Pixel Size	19 µm x 19 µm
Theoretical Resolution	26 lp/mm
Levels of Gray	4096
Dynamic Range	71 dB
Signal-to-Noise Ratio	55 dB
Sensor Cable Length	0.9 m or 3 m
Connection Type	USB 2.0, High Speed
Power Supply	+5 V, per USB 2.0 specification
Level of Protection:	IP67 (sensor only, per IEC 60529)
Options	<p>ClearVision Laptop Suite ClearVision Digital Sensor System along with laptop pre-loaded with Progeny Imaging Software, Progeny Device Suite including TWAIN client and paired ClearVision sensor calibration files</p> <p>Sensor Safe® Extended Care Plan Comprehensive coverage for five years if failure or malfunction due to normal use or accidental damage</p>
Progeny Imaging Software System Requirements	Please visit midmark.com or contact Midmark Imaging Technical Support at 800-643-6275
Integrated Imaging Management Systems	Dexis®, XLDent™, CliniView™, OneView, Eaglesoft® Please visit midmark.com or contact Midmark Imaging Technical Support at 800-643-6275.



Clearvision Sensors
(size 1 and 2)



Rinn XCP-DS FIT positioning
guide holder

ORDERING GUIDE

CLEARVISION SENSORS

- XSDS-01** ClearVision Digital Sensor System, Size 1 sensor
- XSDS-02** ClearVision Digital Sensor System, Size 2 sensor
- XSDS-0B** ClearVision Digital Sensor System, Size 1 and Size 2 sensors

System Includes: ClearVision Digital Sensor with 3 meter (9.84') cable, USB drive with Progeny Imaging Software, sensor calibration file and documentation kit with user manual, sample sheath pack and Rinn XCP-DS Fit positioning guide holder.

CLEARVISION LAPTOP SUITE

- XSDS-01/L** Progeny ClearVision Digital Sensor System with Laptop, Size 1 sensor
- XSDS-02/L** Progeny ClearVision Digital Sensor System with Laptop, Size 2 sensor
- XSDS-0B/L** Progeny ClearVision Digital Sensor System with Laptop, Size 1 and Size 2 sensors

A seamless method for converting a practice to digital radiography, the ClearVision Laptop Suite includes the ClearVision Digital Sensor system along with a laptop preconfigured for your Progeny ClearVision Sensor. The laptop is preloaded with Progeny Imaging Software, Progeny Device Suite including a TWAIN client and the paired ClearVision sensor calibration files.

CLEARVISION SENSOR ACCESSORIES

- 500-432** Sensor Sheaths for Size 1 Sensor (500/box)
- 500-433** Sensor Sheaths for Size 2 Sensor (500/box)
- 45-M3001** Sensor Holder, Desktop
- 45-P0002** Sensor Holder, Arm