

Planmeca Creo™ C5

The ultimate chairside 3D printer built for speed



ENGLISH

PLANMECA

Why 3D printing?

The appliances you need – when you need them

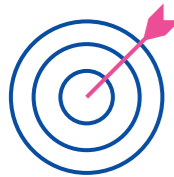
Every dental appliance is different – that's why producing them can be time-consuming and costly. Not so anymore. Chairside 3D printing enables the fabrication of customised dental appliances in a fraction of the usual time. The key to everything is a 3D printer that is fast, durable, and uses printer optimised materials designed specifically for dentistry.



Print the appliances you need when you need them for quicker and smoother treatments



Save time and resources by producing several models at any one time



Obtain predictable, industry grade results with a device targeted for dentistry



Take charge of your workflow from start to finish



Store and transfer your 3D models digitally for easy access and use



Add value to your clinic with new production capabilities

Create your vision



Planmeca Creo™ C5

The exceptionally fast chairside 3D printer

Planmeca Creo™ C5 is the combination of speed and precision you've been waiting for. A blisteringly fast 3D printer designed specifically for dental clinics, the compact chairside device enables fabricating surgical guides, dental models and provisional crowns in a single patient visit.



Unique capsule dosing

Materials for Planmeca Creo™ C5 come in brand new and convenient capsules. They are a completely unique way to dispense high-quality 3D printing materials – without any going to waste. The capsules are incredibly easy to attach to the printer and ensure that the valuable material inside them is always utilised efficiently.

Sheer, uninhibited speed

Combining high speed with high repeatability, this 3D printer is truly made to perform.

Industry quality at an accessible price

A professional grade 3D printer that is both reliable and cost-effective. Designed and manufactured in Finland.

From the professionals, to the professionals

Developed in cooperation with some of the best clinical experts in dental technology.

Printer optimised materials

Materials that are both medically approved and printer optimised to ensure a safe, quality result.



Full aluminium body

Durable, rigid and stable all-metal construction.

Easy as pressing a button

The easy-to-use touch display guides you every step of the way. Comes with optimised pre-programmed material settings – no need to set parameters.

A true chairside 3D printer

A compact, streamlined design that sits perfectly on a countertop or desk.

LCD printing technology

No calibration needed – just plug and print!

Specifications

Plug and play	✓	Open import	STL, PLY
Automatic nesting	✓	Printing technology	LCD
No calibration needed	✓	Build area	68 x 120 mm
Superior build speed	✓	Dimensions	Ø 300 mm, h 500 mm
High resolution printing	✓	X,Y resolution	< 50 µm
Small footprint	✓	Z resolution	25–100 µm
Touch display	✓	Weight	32 kg

Seamless implant guide workflow

Stop guessing and start performing precise surgery

Planmeca offers a complete and unique workflow for producing implant guides. Use any Planmeca CBCT unit to obtain an image of the area of interest and capture a digital impression with a Planmeca intraoral scanner. Design the implant guide in the Planmeca Romexis® software. Proceed directly to print the guide with Planmeca Creo™ C5. Done.

Scan

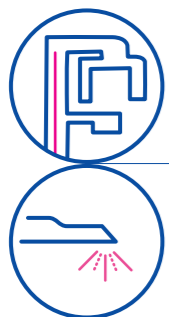
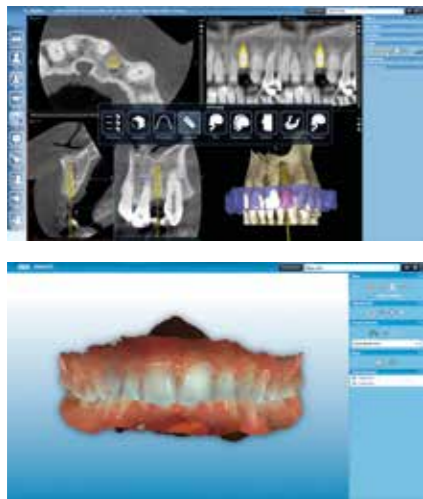
Acquire a cone beam image of the area of interest with any Planmeca CBCT unit. Obtain a digital impression with a Planmeca intraoral scanner such as the quick and precise Planmeca Emerald™.

Design

Analyse the data in the powerful Planmeca Romexis® software and create a complete virtual setup for the implant plan. Then use your plan to create an implant guide in the software with just a few clicks.

3D Print

Print the implant guide as well as the dental model and provisional restoration with the lightning-fast Planmeca Creo™ C5.



Scan



Design



3D Print



One software for all.



Planmeca Oy designs and manufactures a full line of industry-leading dental equipment, including 3D and 2D imaging devices, CAD/CAM solutions, dental care units and software. Planmeca Oy, the parent company of the Finnish Planmeca Group, is strongly committed to better care through innovation, and it is the largest privately held company in the field.

PLANMECA

Asentajankatu 6 | 00880 Helsinki | Finland | tel. +358 20 7795 500 | fax +358 20 7795 555 | sales@planmeca.com | www.planmeca.com

Images may contain optional items not included in standard delivery. Available configurations and features may have country or area specific variations. Some products displayed above may not be available in all countries or areas. Rights for changes reserved.

Planmeca, All in one, Anatomat Plus, Cobra, Comfy, DentreVac, Digital perfection, Economat Plus, Elegant, Flexy, Mini-dent, Perio Fresh, PlanEasyMill, Planmeca 4D, Planmeca AINO, Planmeca ARA, Planmeca CAD/CAM, Planmeca CALM, Planmeca Chair, Planmeca Clarify, Planmeca Compact, Planmeca Creo, Planmeca Emerald, Planmeca FIT, Planmeca Intra, Planmeca iRomexis, Planmeca Lumion, Planmeca Lumo, Planmeca Maximity, Planmeca Minea, Planmeca Minendo, Planmeca Minetto, Planmeca mRomexis, Planmeca Noma, Planmeca Olo, Planmeca Online, Planmeca PlanCAD, Planmeca PlanCAM, Planmeca PlanClear, Planmeca PlanDesk, Planmeca PlanID, Planmeca PlanMill, Planmeca Planosil, Planmeca PlanPure, Planmeca PlanScan, Planmeca PlanView, Planmeca ProCeph, Planmeca ProFace, Planmeca ProLD, Planmeca ProMax, Planmeca ProModel, Planmeca ProOne, Planmeca ProScanner, Planmeca ProSensor, Planmeca ProX, Planmeca Romexis, Planmeca Serenus, Planmeca SingLED, Planmeca SmartGUI, Planmeca Solanna, Planmeca Sovereign, Planmeca Ultra Low Dose, Planmeca Vision, Planmeca Viso, Planmeca Verity, Planmeca Waterline Cleaning System, Planmeca Xtremity, Proline Dental Stool, ProTouch, Saddle Stool, SmartPan, SmartTouch, Trendy, and Ultra Relax are registered or non-registered trademarks of Planmeca in various countries.

