

# Patients Move

Get Clear Images Every Time

Planmeca CALM™

Planmeca ARA™

Planmeca AINO™



**PLANMECA**

# Crystal clear images free from noise, artifacts and movement

*Movement, restorations, artifacts and small voxel sizes influence image quality. At Planmeca, we have technology to address all these and provide you with diagnostically rich images and significantly reduce the risk of retakes. The options can either be selected preventively before imaging or utilized afterwards to achieve reliable results. The choice is yours!*

## **Movement correction with Planmeca CALM™**

- Iterative movement correction algorithm
- Eliminates the need for retakes
- Cancels the effects of patient movement
- Perfect for imaging patients that have difficult time standing still

## **Metal artifact reduction with Planmeca ARA™**

- Reliable algorithm for artifact-free images
- Removes shadows and streaks caused by metal restorations and root fillings
- Tried and tested — the results of extensive scientific research

## **Noise removal with Planmeca AINO™**

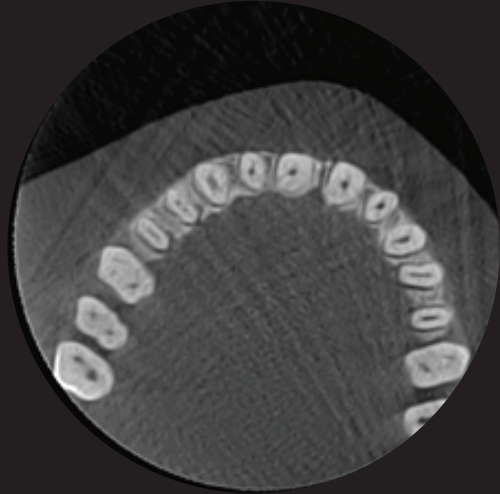
- Noise-free images without losing valuable details
- Allows lower exposure values by reducing noise
- Improves image quality when using small voxel sizes (e.g. in the endodontic imaging mode)
- Enabled by default when using the **Planmeca Ultra Low Dose™** imaging protocol



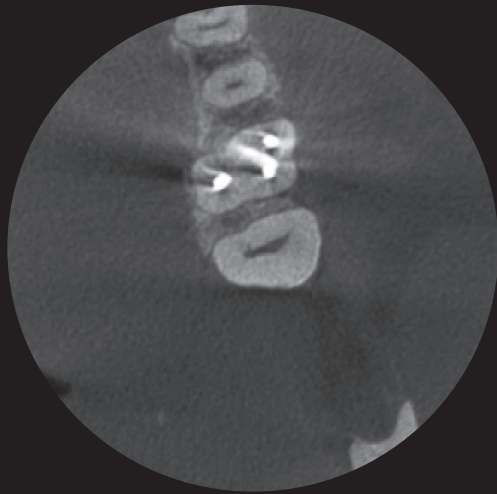
Without movement artifact correction



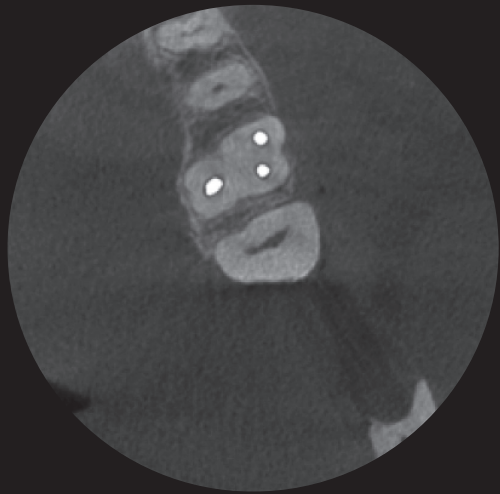
With **Planmeca CALM™**  
movement correction algorithm



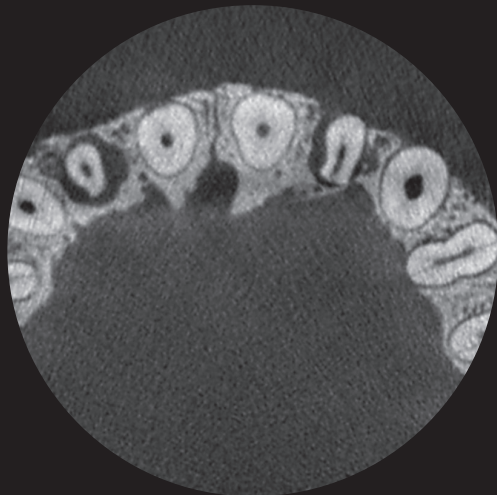
Without artifact removal



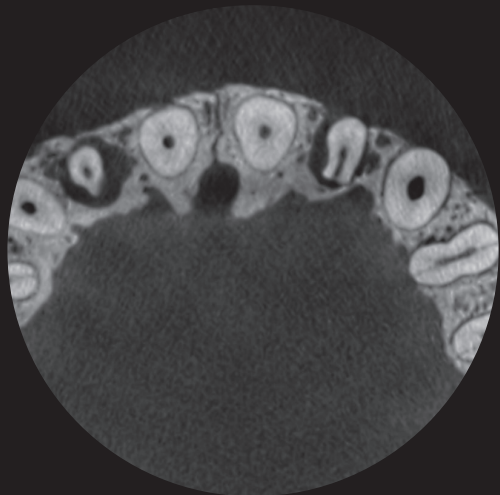
With the **Planmeca ARA™**  
artifact removal algorithm



Without noise removal



With the **Planmeca AINO™** noise filter



# Planmeca Imaging Systems

CBCT units for all your imaging needs

*Planmeca offers exceptional all-in-one units. These imaging systems offer 2D and 3D imaging including panoramic, extraoral bitewing and cephalometric modalities.*

Planmeca  
ProMax® 3D s



Planmeca  
ProMax® 3D Classic



Planmeca  
ProMax® 3D Plus



Planmeca  
ProMax® 3D Mid



Planmeca Viso™ G5



Planmeca Viso™ G7



**PLANMECA**

(630) 529 2300 | [www.planmeca.com](http://www.planmeca.com)

© Planmeca U.S.A. Inc. 2020 All Rights Reserved

Images may contain optional items not included in standard delivery. Available configurations and features may have country or area specific variations. Some products displayed above may not be available in all countries or areas. Rights for changes reserved.