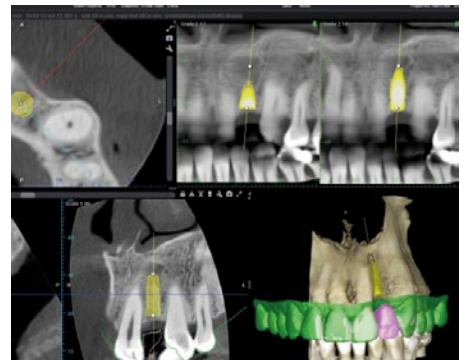
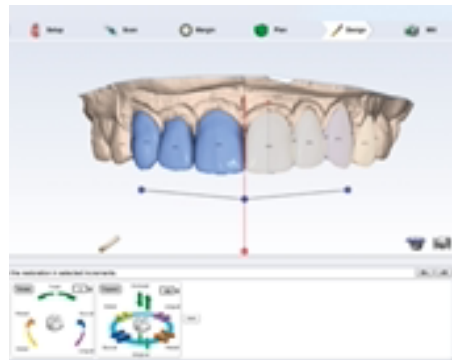


# CAD/CAM Solutions

Bring the power of digital dentistry to your practice.



**PLANMECA**

# Transition into Same-Day Dentistry

Transitioning to a digital workflow brings significant benefits to a dental practice. An increase in efficiencies, accuracy, a better patient experience, and greater practice revenue are some of the highlights. Additionally, clinicians have full control of the entire process from intraoral scanning and designing to milling the final restoration and appliances.

Planmeca, a leader in digital dentistry, offers a comprehensive selection of high-end CAD/CAM solutions to meet the unique demands of every dental practice. Our products are fully integrated, easily implemented into existing technologies and are redefining how doctors view same-day dentistry.

Crowns are the single most valuable procedure in dentistry, accounting for

# 30-50%

of a typical practice revenue.<sup>1</sup>

# 8 out of 10

crowns are accomplished as single crowns.<sup>2</sup>



*“Patients expect fast results and expect to dedicate less time to the process.”*

— Robert Wertke, DMD

# Business of Dentistry

Being successful means different things to different people. It's arguable that all dentists would agree lowering costs, improving care and attracting new patients is paramount to having a thriving business. Offering same-day dentistry is one strategy that positively impacts each of those critical areas allowing you to be more profitable.

**By incorporating CAD/CAM technology you can:**

- Immediately eliminate lab fees
- Improve productivity
- Treat emergency patient's the same day
- Reduce number of patient appointments
- Eliminate any cross-contamination within the office and with outside labs
- Increase patient referrals



## Patient Advantages

The return on investment from same-day dentistry is a practice game changer. Not only does it improve your bottom line, but it also instills a sense of pride within the practice knowing you are offering high-end services. Your patients will be reassured knowing their dentist uses the latest technology for their care. Same-day dentistry is also a practice differentiator helping attract new patients.

**Patients will enjoy:**

- A more pleasant experience with digital impressions and same-day dentistry
- Not having to schedule multiple appointments spanning several weeks to get a final restoration
- Not having to deal with temporaries that can break or fall off
- Be more likely to say "yes" to a procedure knowing it can be completed in a single visit
- Demonstrating your responsiveness to patient needs in today's environment

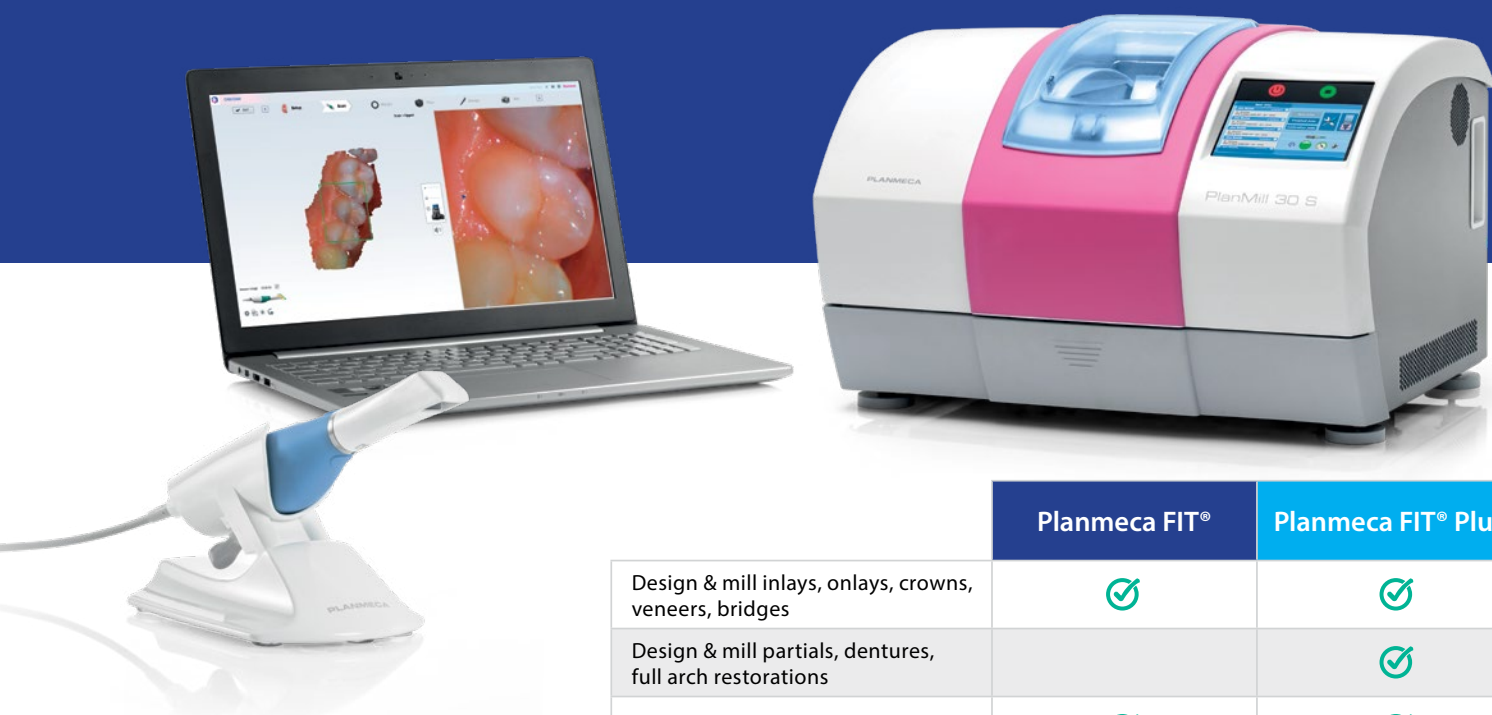


# Planmeca FIT<sup>®</sup>

Enter the world of same-day dentistry with the Planmeca FIT system. This cost-effective milling solution allows you to quickly and efficiently deliver crowns, inlays, onlays, veneers, and 3-unit bridges. The high-performance technology and durable components allow for milling a broad range of materials to provide the best treatment option for your patients. As with all Planmeca products, the Planmeca FIT operates on an open platform for universal connectivity for seamless integration with most dental equipment.

## Planmeca FIT includes:

- Planmeca Emerald<sup>™</sup> S Intraoral Scanner
- Planmeca PlanCAD<sup>®</sup> Easy Design Software
- Planmeca PlanMill<sup>®</sup> 30 S Milling Unit



See which Planmeca CAD/CAM System fits you best.



*Keep your investments in peak performance while you deliver exceptional dentistry.*

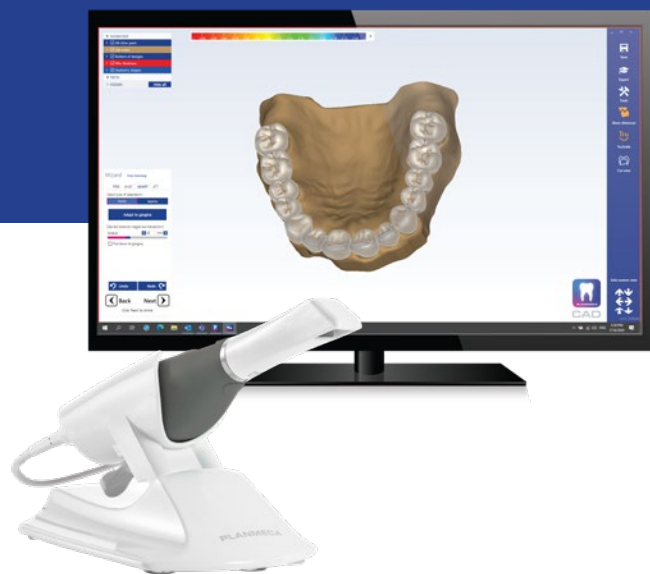
|  | Planmeca FIT <sup>®</sup> | Planmeca FIT <sup>®</sup> Plus |
|--|---------------------------|--------------------------------|
| Design & mill inlays, onlays, crowns, veneers, bridges         | ✓                         | ✓                              |
| Design & mill partials, dentures, full arch restorations       |                           | ✓                              |
| Wet milling  | ✓                         | ✓                              |
| Dry milling  |                           | ✓                              |
| Ability to mill blocks   | ✓                         | ✓                              |
| Ability to mill discs  |                           | ✓                              |
| Lowest cost per crown  |                           | ✓                              |
| Fast processing of IPS e.max <sup>®</sup>                      | ✓                         | ✓                              |
| Fast processing of zirconia                                    |                           | ✓                              |
| Open architecture for easy collaboration                       | ✓                         | ✓                              |
| High volume daily production                                   |                           | ✓                              |
| Up to 7 years of coverage with the Planmeca Protection Program | ✓                         | ✓                              |

# Planmeca FIT<sup>®</sup> Plus

Planmeca FIT Plus is the most sophisticated same-day dentistry solution on the market giving clinicians the ability to perform more procedures in-house and elevate patient care. This complete solution is redefining chairside dentistry radically changing what clinicians can design, manufacture, and deliver in-office as chairside solutions. This enables clinicians to achieve maximum productivity throughout the entire digital dentistry workflow making it an ideal investment for years to come.

## Planmeca FIT Plus includes:

- Planmeca Emerald<sup>™</sup> S Intraoral Scanner
- Planmeca PlanCAD<sup>®</sup> Premium Design Software
- Planmeca PlanMill<sup>®</sup> 50 S Milling Unit



“ The Planmeca FIT system has totally changed the way we do dentistry by creating a workflow that is less expensive, more efficient and has increased patient satisfaction! The scans are easy to attain in a few short minutes with high resolution quality. The design software is user friendly, and the design-to-mill process is very fluid and can be done in less than an hour with the resulting restoration(s) being extremely precise. As an esthetic dentist I also care not only about fit and form, but how well it blends into natural dentition. There is nothing like being able to deliver beautiful restorations in less than two hours! ”

— Dr. Laura Justice



“ Planmeca PlanCAD Premium is the most comprehensive digital restorative software available right now. It covers everything from occlusal guards, complicated implant restorations, dentures and even hybrid prosthetics. The software’s integration with the Planmeca Emerald S and the Planmeca PlanMill 50 S is a phenomenal same-day dentistry chairside solution and allows for a seamless solution to integrate into any busy dental office. ”

— Dr. Wally Renne

# Planmeca Emerald™ S

The Planmeca Emerald S intraoral scanner combines superior accuracy and hyper-speed image capture in one lightweight, easy to use unit. Ideal for quadrant or full-arch scanning, this scanner has the flexibility to move between operatories due to its USB connection. Built on an open architecture, Planmeca Emerald S can be fully integrated with your current equipment or software, allowing for a simple and integrated workflow.

**RATED  
TOP 3 BEST  
Scanners for  
Accuracy<sup>3</sup>**

The Planmeca Emerald S enables these digital workflows:



Restorative



Implantology



Orthodontics



Sleep Medicine

## Hygienic hands-free operation

The scanner's two buttons allow the scanning software to be operated without touching a mouse or keyboard. The dental unit integrated scanner can also be controlled from a foot pedal.

## Small and lightweight

Compact and ergonomic body — easily fits in your hand for more control while capturing images.

## Easy to share

Plug and play capability allows effortless sharing between operatories and laptops

## Replaceable cord

Reduces wear and tear, extending the scanner's life cycle.

## Active antifog scanning

Automatic fog prevention allows continuous scanning and reduces scan times.

## Autoclavable tips

For assurance of infection control.

## Superior accuracy with outstanding speed

Capture images at lightning speed with a richer and more vivid color palette.



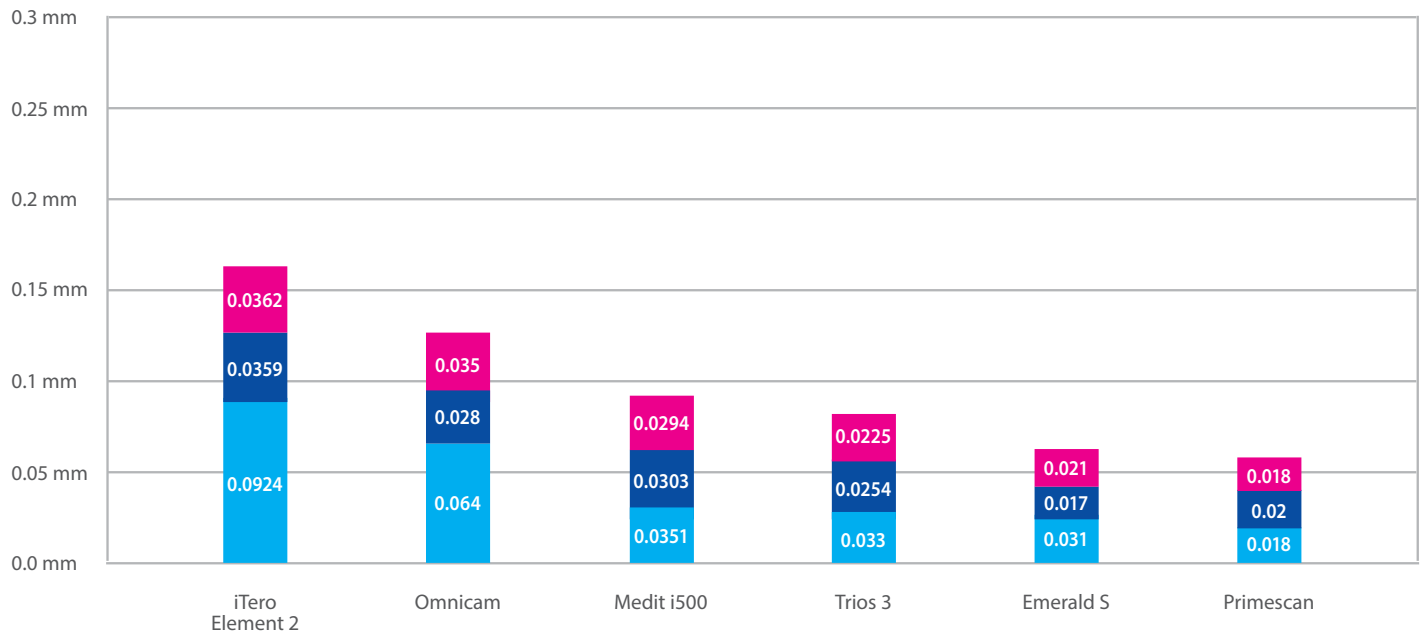
## Accuracy

According to a recent study published in the Journal of Quintessence International<sup>3</sup>, the Planmeca Emerald S was rated a top tier scanner for complete arch trueness and precision, making it an ideal option for quadrant based restorative dentistry as well as full arch scanning for clear aligners, orthodontics, sleep, and implantology.



## “Trueness” Chart

■ Dentin ■ Enamel ■ Cross Arch



## Different Tips For Different Needs



### Standard tip

The Standard scanning tip is the perfect tool for performing general intraoral scanning.



### SlimLine tip

The SlimLine tip is thinner and smaller than the Standard tip, and an ideal choice for scanning patients with smaller mouths. It makes reaching posterior teeth and capturing interproximal areas even easier.



3. Vág J, Renne W, Revell G, Ludlow M, Mennito A, Teich ST, Gutmacher Z. The effect of software updates on the trueness and precision of intraoral scanners. Quintessence Int. 2021 Mar 22;0(0):0. doi: 10.3290/j.qi.b1098315. Epub ahead of print. PMID: 33749223.

# Planmeca PlanCAD<sup>®</sup> Easy

Planmeca PlanCAD Easy design software allows clinicians to create a custom restoration for every case. With user-friendly tools and features, you can design a wide range of prosthetics— from a single crown to a 3-unit bridge.

Planmeca PlanCAD Easy design software offers:

- A full range of traditional chairside indications including crown, inlays, onlays, veneers and bridges
- User-friendly designing with automatic saving, automatic design, and removal of unwanted data
- Open and easy workflow
- Integrated part of Planmeca Romexis<sup>®</sup> software





# Planmeca PlanCAD® Premium

Planmeca PlanCAD Premium gives clinicians the flexibility to design a wide range of dental applications. From crown and bridge designs, waxups, removable partials, and complete dentures, the software provides the freedom to utilize data from different sources without additional fees or complicated workarounds. Its versatility makes this software an ideal tool for advanced dental practices that want unlimited potential for their future.

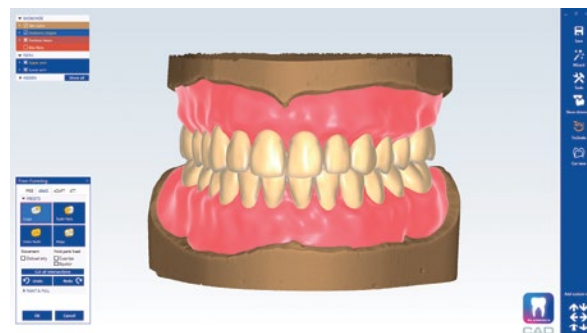
Planmeca PlanCAD Premium design software offers:

- A full range of indications
- Advanced, yet user-friendly tools make it simple to create and modify designs
- Import, export and edit various file formats without any restrictions or complicated workarounds
- Use a built-in wizard or create a customized workflow for maximum efficiency
- Launches seamlessly from Planmeca Romexis®



## Design the widest range of CAD/CAM indications including:

- Crowns, bridges, copings, pontics
- Inlays, onlays and veneers
- Waxups
- Bite splints
- Provisionals
- Smile design
- Removable partials
- Full dentures



# Planmeca PlanMill® 30 S



The Planmeca PlanMill 30 S milling unit is the leading choice for fast and accurate in-office milling. Designed for optimal precision without compromising quality, this budget-minded solution is ideal for everyday milling. Clinicians can mill inlays, onlays, veneers, crowns and up to 3-unit bridges with a broad range of materials. The Planmeca PlanMill 30 S is built on an open platform allowing for simple integration with current equipment.

- 4-axis high-speed spindle mill with linear motors for the highest precision
- Rotary axis enables milling both sides of the block with a single spindle
- On-board computer to independently control jobs to mill allowing optimal control
- Guided maintenance — from daily cleanings and water changes to annual preventive maintenance notifications

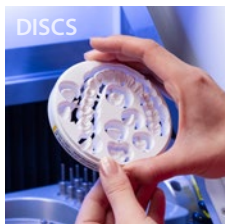
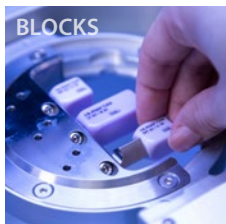
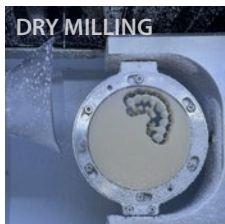
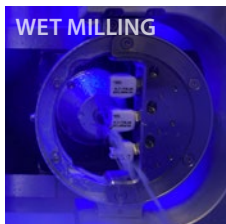
- Automated 5 tool changer that detects worn or broken burs
- Fast and precise milling — about 11-13 minutes per restoration depending on material choice
- Expanded range of applications — crowns, inlays, onlays, veneers and bridges
- Broad range of materials available



# Planmeca PlanMill® 50 S



The Planmeca PlanMill 50 S is a versatile, 5-axis unit for wet and dry milling of discs and blocks. Equipped with a high-speed spindle and an automatic changer for 12 tools, this robust unit can mill a broad range of materials including zirconia, IPS e.max®, PMMA, wax and much more. Planmeca PlanMill 50 S is designed on an open platform for seamless integration and offers maximum productivity while also providing highly accurate and esthetic restorations.



## Increase efficiency, maximize productivity, and do more in-house

- 5-axis milling unit
- Choice of wet or dry processing
- Broad range of materials available including zirconia, IPS e.max®, PMMA, ceramics, composites, wax, and more
- Ability to use discs or blocks
- 12 tool automatic changer
- Single crown to full arch restoration
- Compatible with all 98mm and 98.5mm discs up to 25mm in thickness
- Open architecture for easy integration

2D/3D Imaging

CAD/CAM

Cabinetry

Dental Units

Hand Instruments



At Planmeca, we do things differently. We are in a unique position as one of the largest, privately owned dental manufacturers in the world. It means we set our own priorities. Our Finnish-based research and development team collaborate with industry thought leaders around the globe to reach higher and bring superior products to the dental space.

(630) 529 2300 | [www.planmeca.com](http://www.planmeca.com)

Images may contain optional items not included in standard delivery. Available configurations and features may have country or area specific variations. Some products displayed above may not be available in all countries or areas. Rights for changes reserved.

© 2021 Planmeca U.S.A. Inc. All Rights Reserved. PMCA-CDM-BR0006A 05/21

**PLANMECA**  
Better care through innovation