



VATECH ASSURANCE

vatech america

NEW GREEN INNOVATION

4-in-1 DIGITAL X-RAY IMAGING SYSTEM



- 4-IN-1 DIGITAL [PANO | CEPH | CBCT | MODEL]
- LOW DOSE AND HIGH IMAGE QUALITY
- MULTI FOV SELECTION
- THE ART-V
- GREEN SCAN TIME
- 3D SCANNING FOR MODEL





4-in-1 Digital

Green CT 2 is an advanced 4-in-1 digital X-ray imaging system that incorporates PANO, CEPH (Optional), CBCT and MODEL Scan. It provides high quality images with lower radiation by combining imaging processing and accumulated experience in dental imaging from VATECH. This will improve your diagnostic accuracy with increased treatment planning and patient satisfaction.



Multi FOV Selection

Green CT 2 offers a range of selectable fields of view. The Multi FOV enables the user to select the optimum FOV Mode and minimizes exposure to areas not in the region of interest. Select the proper FOV size among 18x10, 16x9, 13x10, 12x9, 8x9 and 5x5 based on a particular diagnostic need. It covers the full arch region, sinus and left/right TMJ and it suits most oral surgery cases as well as multiple implant surgeries.

16x9 cm : Multi [5x5 / 8x9 / 12x9 / 16x9 / 16x15 (Optional) cm]

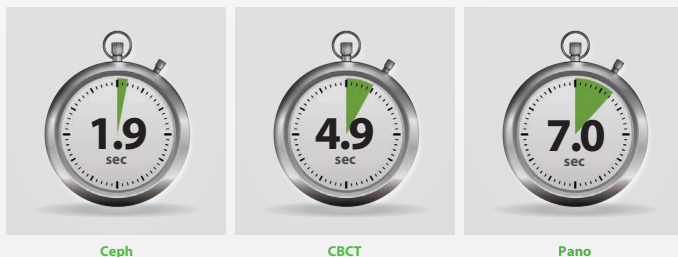
18x10 cm : Multi [5x5 / 8x9 / 13x10 / 18x10 cm]

FOV	ROI	ROI Explanation
16x9 / 18x10		Sinus & TMJ Optimal size for sinus & TMJ diagnosis
12x9 / 13x10		Airway Accurate diagnostic information for the airway
8x9		Arch Basic FOV size & select a left or right or center arch
5x5		Endo & Single implant Optimal size to cover 3-4 teeth through capturing ROI

Green Scan time

Green CT 2 minimizes motion artifact and enables faster workflow due to its scan time.

It produces superb diagnostic images, which will be a source of pride for any dental practice. Focusing on the highest quality of patient care, Vatech strives to improve the health and safety of your patients.

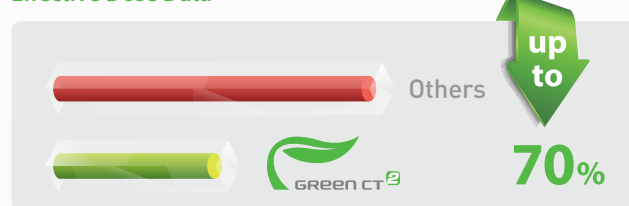


Low Dose and High Image Quality

What has been developed at VATECH breaks many conventions in dental radiography.

It was always believed that with low radiation comes inferior image quality, which renders it useless in clinical diagnosis. However, Green CT 2 provides clinically diagnosable X-ray scans at a low X-ray dosage. With low dose X-ray radiography, achieving clinically diagnosable image quality is the new golden-standard.

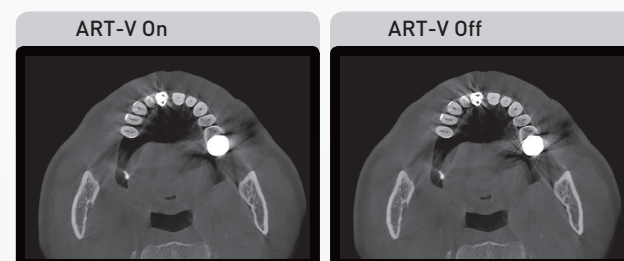
Effective Dose Data



The ART-V

Metal artifact hinders visualization and naturally reduces diagnostic confidence.

Clear image gives you less stress and more confidence which leads to accurate diagnosis for implant planning.



*ART-V is the new name of VATECH's MAR function.
(Artifact Reduction Technology of VATECH)

3D Scanning for Model

3D model scan enables to store plasters as digital models.

Digitized One-stop Clinic



[CAD/CAM integration]

- Sufficient level of detail for surgical guide design



[Specially designed Jig]

- Stable protection from partial model to full model

*3D scanning for Plaster Cast with FOV 8x9 (cm)